

# Technisonic Comm Radio

Display, knobs, and toggles  
- normal operation

## Display

**Top** = MAIN (active) freq

**Bottom** = GUARD  
(listening) freq



- MAIN knob. . . . . Off/On and volume for MAIN freq
- GUARD knob . . . . . vol. for GUARD freq
- MN/GD toggle . . . . controls which freq (MAIN or GUARD) you transmit on (usually MN)
- GD1/GD2 toggle. . . selects one of two GUARD freqs. - select whichever position gives you the freq you were briefed on to guard (usually G1)
- HI/LO . . . . . Transmitter power - leave on HI

Squelch button

Don't touch.

4 & 6 Scan/Scroll Frequencies / 2 & 8 Adjust Brightness



Technisonic

TDFM-136

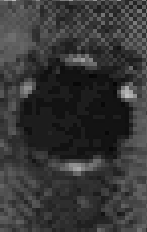
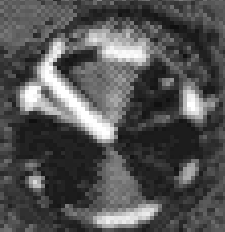
225

001 FORESTRY n174.8000Rn  
 GD1 COMHAND 0164.2500Rc

MAIN

GUARD

SQUELCH



OFF

MN

G1

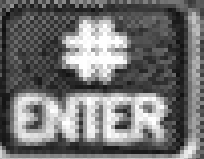
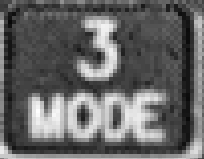
HI



50

62

80



# External Buttons



located below throttle

NOTE: Mission Master must be ON to light up these buttons.

- must be set up properly.
- seat position 2 (right front) or 3 (left rear)
- FM or UHF

